



Read prior to installation!

Pony/Touring style seat headrest bracket



Standard style seat headrest bracket



Nuts and Bolts X2



Lock mechanism facing in



Headrest post escutcheon and lock



Headrest Identification

Pony/Touring Headrest

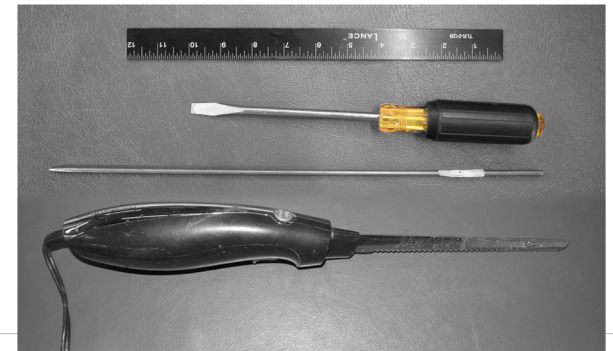


Standard Headrest



Tools

- Screwdriver
- Awl or wire
- Razor knife

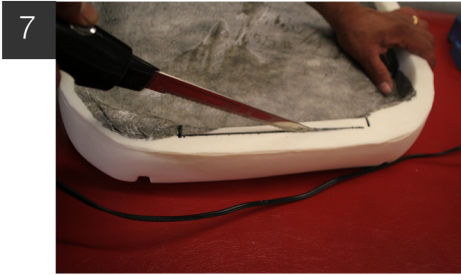




Step 1 • Using the illustrations, locate the holes in the seat frame and mount the headrest bracket with the supplied hardware.
Photos: 1-3

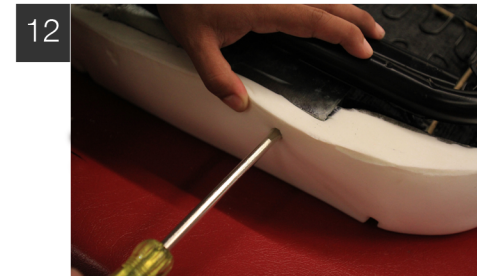
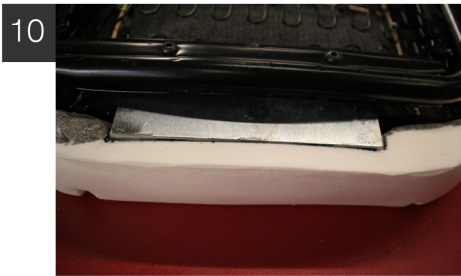


Step 2 • With headrest bracket mounted and seat foam attached to frame, measure and mark a line 1/2" wide the length of the bracket as illustrated.
Photos 4-6



Step 3 • Trim the seat foam with a razor knife along line marked in Step 2. * Use caution when working with sharp objects.

Photos 7-9

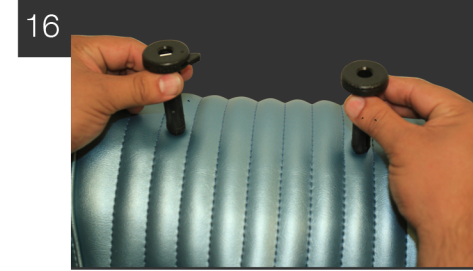
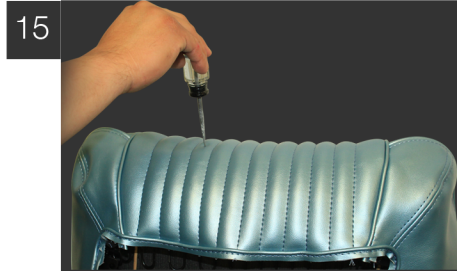


Step 4 • Slide the seat foam over headrest bracket as illustrated. Use a piece of heavy gauge wire or an awl to make 2 holes in the foam aligning with the holes in the headrest brackets.

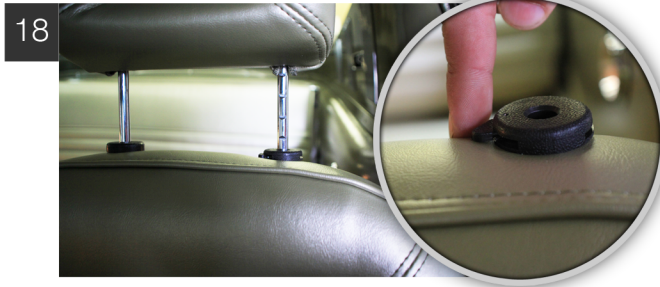
Photos 10-13



FOR REFERENCE ONLY



Step 5 • Install the upholstery, make 2 holes for the headrest post escutcheon through the upholstery as illustrated and lock and attach the seat back.
Photos 15-16



Step 6 • Slide Headrest posts into the escutcheon/lock and adjust height to preference.
Photos 17-19

NOTE:
PHOTO 18 - The locking mechanism will always face in, from the left side of the shoulder of the seat.

Repeat this process for the remaining seat.